

Dear Lidia



Designed by [YuliaAV](#)

This shawl is made from bottom to top in one piece using short rows.
Final weight of sample shawl (yarn only – without beads) – 70 grams.

Yarn and Beads:

Approximately 650 meters/710 yards of laceweight.

Sample shawl – REINA, Super Kid Mohair 72%, polyamide 28%, 200m/25g.
90 clear beads 3-4 mm (Optional).

Needles:

Circular US 10 (6 mm) 32" – cast on

Circular US 4 (3.5 mm) or size needed to obtain gauge 32" – shawl body

Circular US 7 (4.5 mm) 32" or DPN US 7 (4.5mm) 6" – bind off

Gauge (using US 4 (3.5mm) needles):

Approximately 14 stitches and 32 rows to 4" in Garter Stitch after blocking.

Helpful Tools:

Stitch markers, a blunt tapestry needle to weave in ends of yarn, crochet hook (size corresponding to the bead hole size) to add beads, T-pins for blocking.

Skill Level:

Experience with Charts & short rows.

Dimensions:

Width – 65"/165 centimeters (adjustable by increasing or decreasing number of pattern repeats) from side to side

Length at center - 18" / 45 centimeters

Length at side edge - 12" / 30 centimeters

All dimensions can be adjusted by using a different weight of yarn.



All images, charts and text copyright YuliaAV

General Instruction:

Using US10 (6mm) needles loosely cast on 363 stitches using the Backward Loop Cast On method (see Pattern Notes section for Backward Loop Cast on method video link).

Switch to US 4 (3.5mm) needles for the shawl body. Purl one row.

Beads (optional) placement is shown in yellow in the chart's first row (see Pattern Notes section for Placing beads video link).

Complete rows 1 - 59 of chart.

Row 60 – Knit 2 stitches, purl to last 2 stitches, knit 2 stitches. Mark the center stitch with a stitch marker.

Short Rows Formation:

The rest of the shawl's body knitting is completed using the Wrapping & Turning method (W&T) for creating short rows (see Pattern Notes section for W&T Shorts Rows on Right or Wrong side of work instructions).

Row 61: Knit across the row until the marked center stitch, knit the central stitch, knit 4 stitches after the center stitch. Turn work using the W&T method for Right side. As a result, the fifth stitch after the center marked stitch is now wrapped.

Row 62: Purl 9 stitches. Turn work using the W&T method for Wrong side. As a result, the tenth stitch from the turn is now wrapped.

Row 63: Knit across the row until 1 stitch before the wrapped stitch. Slip stitch to your right needle. Knit the wrapped stitch and the wrap together. Pass the slipped stitch over the last stitch on the right needle (Note: any other left leaning decrease method may be used). Knit 4 stitches. Turn work using the W&T method for Right side.

Row 64: Purl across the row until the stitch before the wrapped stitch. Purl the next two stitches together as one. Purl 4 stitches. Turn work using the W&T method for Wrong side.

Beginning with row 65, continue work by alternating rows 63 and 64 until all stitches are used.

Finish on a wrong side row.

Edge:

Knit 2 stitches, *Knit 2 stitches together as one. Yarn over.* Repeat between the *s until 3 stitches remain on the left needle. Knit last 3 stitches.

Knit 1 row.

Purl 1 row.

Switch to a US7 (4.5mm) needle. **Note:** the bind off edge must be completed loosely.

Bind off stitches as explained: *Purl 2 together as one. Slip the stitch from your right needle to the left needle. Repeat between the *s until 1 stitch is left. Cut the yarn (leaving enough yarn to finish & weave in the end), pull yarn through the last stitch & tighten it up.

Finishing:

Block the shawl: Pin the side edge corners of the bind off edge. Then pin the corners in the center of the shawl. Continue pinning the corners to the left then right of the shawl center until all are pinned.

The inner edge of shawl does not require separate pinning. Tension created while blocking the cast on edge will cause it to naturally lie nice and flat.

Let the shawl dry completely and then remove the blocking pins.

Now all you have left to do – is either enjoy the soft and delicate touch of the beautiful piece you just created or give it as a gift to someone special!

Pattern Notes

[Video – Backward Loop Cast On method – How it was done for the sample shawl.](#)

[Video – Placing beads – How it was done for the sample shawl.](#)

The chart shows all stitches to be completed (including edge stitches). No additional stitches are needed before or after the charted stitches.

The chart stitches between the red lines indicate the pattern repeat stitches. Adjustments to add or remove full pattern repeats will increase or decrease the size of your finished shawl.

The chart stitches on wrong side: first two and last two stitches of chart – knit on wrong and right side. Knit all other stitches on wrong side as they look (Stitches knitted on right side – purl on wrong side. Stitches purled on right side – knit on wrong side.). YO – purl on wrong side.

Starting row 23 there is a combination K2TOG, YO, P. For those who knit English style you may want to purl YO's on the next wrong side as PTBL (purl through the back loop) for this combination (K2TOG, YO, P) to avoid sloppy and loose YO's holes.

W&T Shorts Rows on Right side of work

- Knit the required number of stitches in the short row. Slip the next stitch purlwise to the right needle
- Bring the yarn forward
- Return the slipped stitch to the left needle
- Return the working yarn to the back of work (Note: the wrap loop should be loose in order to be easy to pick up as you will use it in the next row)
- Turn your work.

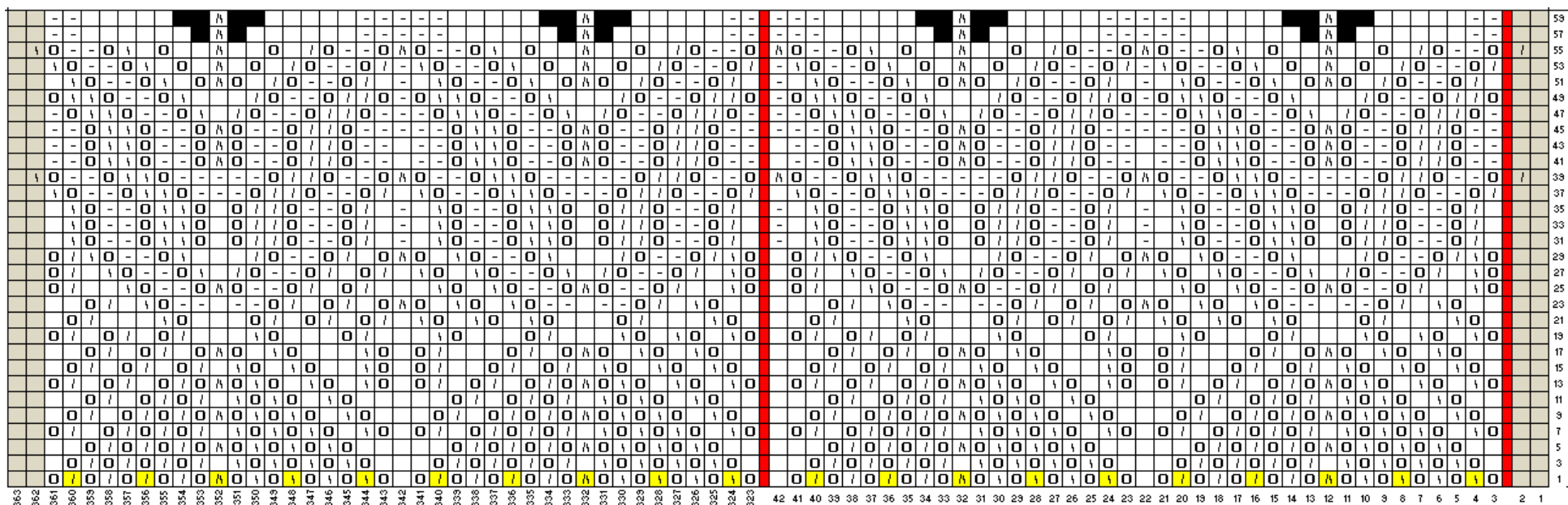
It is ready now for knitting on the wrong side of your work.

W&T Shorts Rows on Wrong side of work

- Purl the required number of stitches in the short row. Slip the next stitch purlwise to the right needle
- Bring the yarn back
- Return the slipped stitch to the left needle
- Return the working yarn to the front of work (Note: the wrap loop should be loose in order to be easy to pick up as you will use it in the next row)
- Turn your work.

It is ready now for knitting on the right side of your work.

In order to avoid holes in the body of your work when you are turning your work, knit or purl the wrapping loop together with the stitch it's wrapping.



Only right side stitches are shown on the Chart.

The section between the red lines (stitches 3-42) is the repeat.

Legend:

- Knit on right side, purl on wrong side
- Purl on right side, knit on wrong side
- Yarn Over on right side, purl on wrong side
- Left Leaning Decrease (Slip one stitch from the left needle to the right needle as if to knit, knit the next stitch, pass the slipped stitch over the knitted stitch); purl on wrong side
- Right Leaning Decrease (Knit two stitches together as one); purl on wrong side
- Double decrease (Slip two stitches at once from the left needle to the right needle as if to knit, knit the next stitch, pass the two slipped stitches over the knitted one); purl on wrong side
- Double Decrease - place a bead on completed stitch; purl on wrong side
- Right Leaning Decrease - place a bead on completed stitch; purl on wrong side
- Left Leaning Decrease - place a bead on completed stitch; purl on wrong side
- Left Leaning Decrease on right side; knit on wrong side
- Right Leaning Decrease on right side; knit on wrong side
- Knit on right and wrong side
- No stitch